

ECOAIRE

COMPRESSOR

DIRECT MOTOR DRIVEN AIR COMPRESSOR

Efficient, Energy Saving and Intelligent

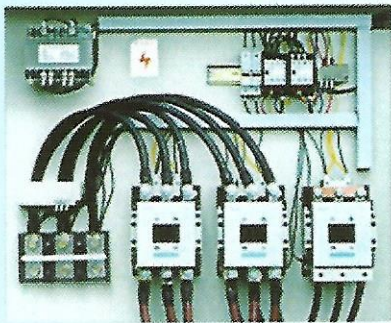
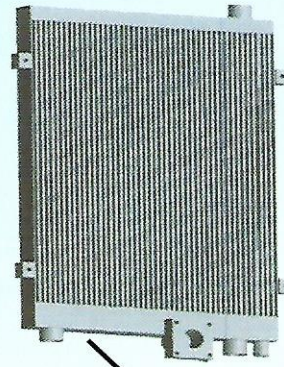


Screw Air Compressor
Motor from 10-350 HP

Energy saving
ISO9001
CERTIFICATION

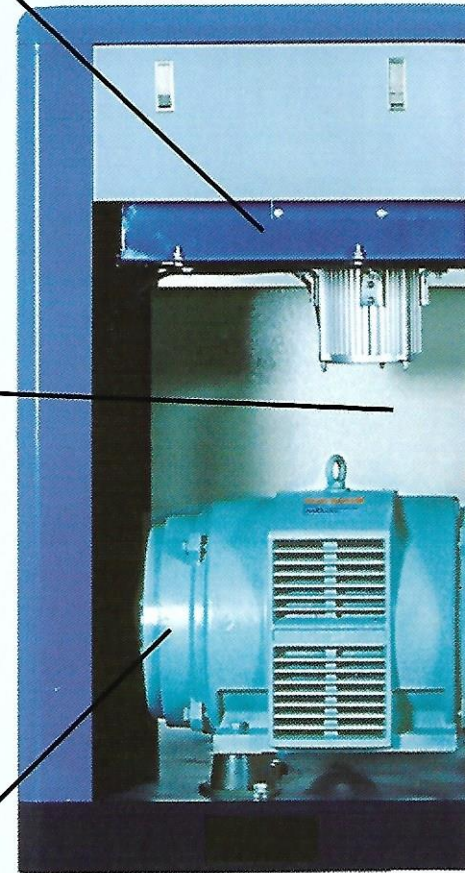
Large Cooler Efficiency

The enlarged oil / air cooler-aftercooler is built larger and its cooling fins uniquely structured to achieve higher cooling efficiency even when running in continuous high load operations. Running temperatures is keep at a low with the combination of a large high cooling fan.



Main Electric Control Components

Main electrical components used in controls switchgear are high quality. German brands to safeguard and ensure long service life to the machine.



Main Electric Motor

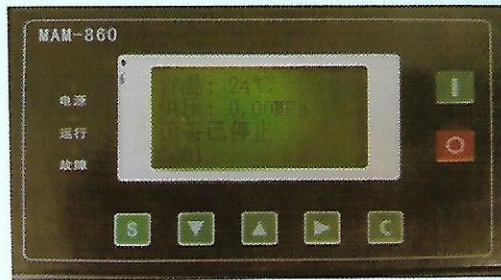
Selected premium motor of well known brand for high efficiency with IP54 protection ensure long service life. Anti-vibration pads at motor base provide minimum resonance and reduce noise effectively.

Direct Motor Driven System

The direct motor driven system eliminates the inefficiency of rotor air-end, belts or transmission gears, reducing wear and tear.

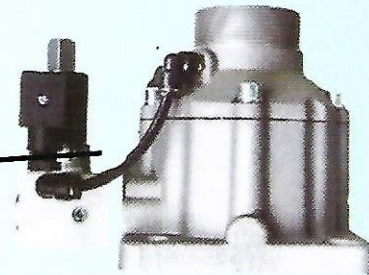
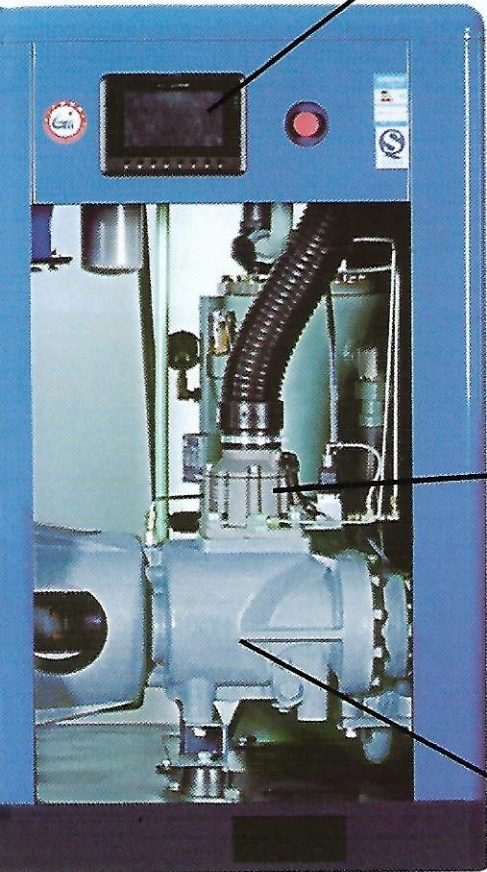
Dynamic Balance in Drive

The head of the screw air compressor is locked in dynamic balance, providing power which achieves higher efficiency and saving energy in power.



Interactive LED Controller

The intelligent LED controller on the air compressor panel collect operation data during operation and display such information on the screen which enable immediate attention to remedy any problem indicated on the screen.



Air Inlet Valve

The air intake valve is enhanced by its design to control and deliver required air capacity whilst the pressure differential mechanism eliminate unnecessary load and reduce running electric power of the machine.



Screw Air-End

Excellent performance by using a German patented design of 5:6 asymmetrical rotor which is reliable for continuous high load operation and longer service life.

tem

tem greatly increases the
with lower speed without polley
and consequently with lesser

ECT Air End-Motor Drive

ompressor and main motor is
nd enabling direct driven
efficiency in air compression
transmission.

ECOAIRE Air Compressor

★ Air-cooled screw air compressor technical data chart

Model	Discharge Pressure (Mpa)	Flow Capacity (m ³ /min)	Motor (KW/HP)	Noise (dB)	Overall Dimension (LxWxH)(mm)	Air Outlet Pipe Diameter (inci)	Weight Kg
FC-10	0.80	1.10	7.5 / 10	62	900x700x830	G3 / 4	223
	1.00	0.95					
	1.30	0.80					
FC-15	0.80	1.53	11 / 15	63	1050x750x1000	G1	333
	1.00	1.32					
	1.30	1.10					
FC-20	0.80	2.03	15 / 20	63	1050x750x1000	G1	333
	1.00	1.82					
	1.30	1.55					
FC-25	0.80	2.90	18.5 / 25	65	1380x850x1160	G1	473
	1.00	2.52					
	1.30	2.30					
FC-30	0.80	3.30	22 / 30	68	1380x850x1160	G1	487
	1.00	3.00					
	1.30	2.70					
FC-40	0.80	4.70	30 / 40	68	1380x850x1160	G1	544
	1.00	4.30					
	1.30	3.70					
FC-50	0.80	6.20	37 / 50	68	1500x1000x1320	G1 1/2	562
	1.00	5.60					
	1.30	5.10					
FC-60	0.80	7.40	45 / 60	69	1500x1000x1320	G1 1/2	800
	1.00	6.70					
	1.30	5.80					
FC-75	0.80	9.60	55 / 75	72	1800x1250x1670	G2	1190
	1.00	8.50					
	1.30	7.50					
FC-100	0.80	12.50	75 / 100	72	2000x1250x1670	G2	1350
	1.00	11.60					
	1.30	9.80					
FC-150	0.80	19.40	110 / 150	75	2500x1470x1840	G3	2320
	1.00	16.35					
	1.30	13.12					
FC-175	0.80	24.20	132 / 180	75	2500x1470x1840	DN65	2600
	1.00	21.00					
	1.30	18.30					
FC-200	0.80	27.60	160 / 200	76	3000x1700x1950	DN80	3000
	1.00	25.30					
	1.30	22.40					
FC-250	0.80	30.80	185 / 250	77	3000x1700x1950	DN80	3600
	1.00	28.20					
	1.30	25.10					
FC-300	0.80	34.90	220 / 300	77	3175x1700x2200	DN100	4150
	1.00	32.10					
	1.30	29.00					
FC-350	0.80	40.90	250 / 350	77	3175x1700x2200	DN100	4500
	1.00	38.30					
	1.30	34.30					

Test standard : Ambient temperature 25°C, moisture 30%, atmospheric pressure 1.013 bar.

Special models can be made to order according to the requirements.