

PK/PUK Series



PK100300



PK2090IS2

ISO-9002 Class-A  

MODEL	PK2090IS2	PK30120	PK50160	PK75250	PK100300	PK150300	PK200300	PK300500
HP	2	3	5	7.5	10	15	20	30
KW	1.50	2.20	3.75	5.60	7.50	11.2	15.0	22.0
DISPLACEMENT (L / MIN / CFM)	300/10.6	465/16.4	751/26.5	1118/39.5	1538/54.3	2198/77.6	3000/106	3805/134
R.P.M	983	771	830	890	816	648	750	950
No. of CYL	2	2	3	2	3	3	6	6
MAX PRESSURE (KG / CM ² / PSI)	10/142	10/142	10/142	10/142	10/142	10/142	10/142	10/142
WORKING PRESSURE (KG / CM ² / PSI)	8/115	8/115	8/115	8/115	8/115	8/115	8/115	8/115
TANK CAPACITY	88/23	120/32	160/42	250/66	300/79	300/79	300/79	500/132
N.W (KG / LBS.)	97/213	144/316	199/437	301/662	362/796	534/1174	425/995	651/1432
DIMENSION (cm)	117x49x85	132x53x96	155x58x106	161x70x115	191x76x121	191x76x142	191x76x142	201x80x145

AIR COMPRESSORS BELT-DRIVE TWO STAGE



TK-50250



TK-150300



ISO-9002
Class-A

MODEL	TK30160	TK50250	TK75300	TK100300	TK150300	TK300500
HP	3	5	7.5	10	15	30
KW	2.20	3.75	5.60	7.50	11.2	22.0
DISPLACEMENT (L / MIN / CFM)	304/10.7	578/20.4	754/26.3	1090/38.5	1560/55.1	3000/106
R.P.M	1010	960	1185	870	690	770
No. of CYL	2	3	2	3	3	4
MAX PRESSURE (KG / CM ² / PSI)	16/228	16/228	16/228	16/228	16/228	16/228
WORKING PRESSURE (KG / CM ² / PSI)	12/171	12/171	12/171	12/171	12/171	12/171
AIR L/GAL.	160/42	250/66	300/79	300/79	300/79	500/132
N.W (KG / LBS.)	170/374	261/574	332/730	364/800	530/1166	651/1432
DIMENSION (cm)	155x58x106	160x70x115	191x76x121	191x76x121	191x76x142	201x80x145

PETROL / DIESEL DRIVEN TWO STAGE

FEATURES:

* The new single body valve design can increase compression efficiency and make maintenance very convenient. By adopting the most superior cast iron material, this air compressor is designed for industry use thus it is super water resistant. With the multi-blade heat dissipating fan, forced cooling, the heat dissipating system of this compressor is considered the best.

- * Solve your problem at area without electricity.
(Construction Site, Highway Construction, Tyre Problem)
- * Special design engine base to lower vibration.
- * Compact and easy delivery.



MODEL	CT50-160G	CT50-250G	GT55-160G	GT55-250G
HP	5.5	5.5	5.5	5.5
Working Pressure (KG / BAR)	14	14	14	14
Displacement (L/min, cfm)	392 / 13.8	392 / 13.8	330 / 11.65	330 / 11.65
R.P.M	650	650	1030	1030
Tank Capacity (Litre)	156	228	160	228
Dimension (cm)	154 x 57 x 106	150 x 60 x 104	116 x 54 x 105	150 x 58 x 108
Net Weight (kgs)	167	212	174	229
Petrol Engine Type Model	ROBIN EY-20 OR HONDA GX 160			

VERTICAL BELT-DRIVE TWO STAGE

**World Brand
Energy Valve**

ISO-9001    

USAGE:

* Suitable for use in factories, automatic systems, auto service, finishing and any works requiring compressed air. Minimum space require and Easy to use.



MODEL	CT50-160V	CT75-250V	TK50-250V	TK75-250V
HP	5	7.5	5	7.5
Working Pressure (KG / BAR)	12	12	12	12
Displacement (L/min, cfm)	585 / 21	880 / 31	485 / 17.13	630 / 22.25
R.P.M	970	880	800	1000
Tank Capacity (Litre)	228	228	228	228
Dimension (cm)	98 x 78 x 148	115 x 78 x 160	98 x 78 x 148	115 x 78 x 160
Net Weight (kgs)	247	327	257	317

2G : GASOLINE ENGINE TYPE
2D : DIESEL ENGINE TYPE



PUK20-100G

MODEL	PUK20-100G
HP - KW	5.5HP
DISPLACEMENT (L / MIN / CFM)	300/10.6
R.P.M	1010
No. of CYL	2
MAX PRESSURE (KG / CM ² / PSI)	10/142
WORKING PRESSURE (KG / CM ² / PSI)	8/115
AIR L/GAL.	100/26
N.W (KG / LBS.)	97/213
DIMENSION (cm)	117x49x85

ISO-9002 Class-A  

ELECTRIC DIRECT AIR COMPRESSOR



XN-2040

MODEL	XN2040
HP	2HP
R.P.M	2850
DISPLACEMENT	200LTR/MIN
WORKING PRESSURE	8KG/CM ²
MAX PRESSURE	10KG/CM ²
TANK CAPACITY	40LTR
N.W	28KG
DIMENSION (cm)	60x26x59

ISO-9002 Class-A  

PUMA OIL-FREE AIR COMPRESSOR



MB-0104

MODEL		MB-0104
POWER	HP	1/8
	KW	8-0.1
DISPLACEMENT (L / MIN / CFM)		17-0.6
SPEED	R.P.M	1450
No. of CYL		1
MAX PRESSURE (KG / CM ² / PSI)		4-57.5
TANK CAP. (LITRE-GAL)		4 (1)
N.W (KG / LBS.)		7 (16)
L X W X H (cm)		37 X 17 X 37



OLD2010V
(OIL-LESS)

MODEL		OLD2010V
POWER	HP	2
	KW	
DISPLACEMENT (L / MIN / CFM)		170 L/M
SPEED	R.P.M	1720
No. of CYL		1
MAX PRESSURE (KG / CM ² / PSI)		8KG/CM ²
WORK CAPACITY (KG / CM ² / PSI)		8/115
TANK CAP. (LITRE-GAL)		30
N.W (KG / LBS.)		39
L X W X H (cm)		60 x 26 x 59



ISO-9002
Class-A

DIRECT OIL-LESS AIR COMPRESSORS

- Running stably.
- Low noise.
- No oil pollution.
- High efficiency.
- Environmental protection.

QUIET



WE076



WE125



WE130AVP



WE160A-2



WE1110A-3



WE1130A-4

MODEL	HP - KW	l/min/CFM	R.P.M.	NO.	WORK kg/cm ² /psi	AIR l/Gal.	kg/Lbs.	cm	Remark
50HZ									
WE076	0.75 / 0.55	95 / 3.4	1400	2	8 / 115	6 / 1.5	16 / 35	46×21×53	
WE125	1.00 / 0.75	125 / 4.4	1400	2	8 / 115	23 / 6.0	24 / 52	59×29×61	
WE125A	1.50 / 1.10	180 / 6.4	1400	2	8 / 115	23 / 6.0	33 / 73	59×29×68	
WE130AVP	1.50 / 1.10	180 / 6.4	1400	2	8 / 115	30 / 8.0	41 / 90	40×40×86	
WE160A-2	3.00 / 2.20	360 / 12.7	1400	4	8 / 115	60 / 16.0	70 / 154	95×38×76	
WE1110A-3	4.50 / 3.40	540 / 19.1	1400	6	8 / 115	110 / 30.0	105 / 231	127×40×83	
WE1130A-4	6.00 / 4.50	720 / 25.4	1400	8	8 / 115	130 / 34.0	132 / 290	150×41×83	
60HZ									
WE076	0.75 / 0.55	105 / 3.7	1700	2	8 / 115	6 / 1.5	16 / 35	46×21×53	
WE125	1.00 / 0.75	140 / 4.9	1700	2	8 / 115	23 / 6.0	24 / 52	59×29×61	
WE125A	1.50 / 1.10	205 / 7.2	1700	2	8 / 115	23 / 6.0	33 / 73	59×29×68	
WE130AVP	1.50 / 1.10	205 / 7.2	1700	2	8 / 115	30 / 8.0	41 / 90	40×40×86	
WE160A-2	3.00 / 2.20	410 / 14.5	1700	4	8 / 115	60 / 16.0	70 / 154	95×38×76	



PK10



PK50



PK150



PK300



TK50



TK75



TK100



TK150



TK300

MODEL	HP	KW	1/min/CFM	R.P.M.	NO.	MAX Kg/cm ² /psi	Kg/Lbs.	cm
PK01	1/4	0.18	55/2.0	720	1	10/150	8/17	12x20x25
PK02	1/2	0.37	100/3.5	570	2	10/150	16/35	33x30x27
PK10	1.0	0.75	185/8.5	980	2	10/150	19/42	39x27x33
PK20	2.0	1.50	300/10.5	980	2	10/150	20/44	40x27x37
PK30	3.0	2.20	430/15.0	900	3	10/150	23/50	44x27x37
PK40	4.0	3.00	570/20.0	950	2	10/150	43/95	60x40x59
PK50	5.0	3.75	750/26.0	830	3	10/150	61/134	73x43x66
PK75	7.5	5.60	1120/40.0	890	2	10/150	81/178	75x49x67
PK100	10	7.50	1550/55.0	820	3	10/150	103/226	75x55x73
PK150	15	11.2	2200/78.0	810	3	10/150	178/356	100x67x81
PK200	20	15.0	3000/106.0	870	3	10/150	187/411	100x67x81
PK300	30	22.0	3800/134.0	870	4	10/150	206/453	112x68x80
TK30	3.0	2.20	300/10.5	1010	2	16/230	48/105	63x40x59
TK50	5.0	3.75	560/20.0	960	3	16/230	62/136	73x43x66
TK75	7.5	5.60	730/26.0	1180	2	16/230	83/182	75x49x67
TK100	10	7.50	1070/38.0	870	3	16/230	105/231	75x55x73
TK150	15	11.2	1560/55.0	870	3	16/230	178/356	100x67x81
TK200	20	15.0	1980/70.0	870	3	16/230	193/424	100x67x81
TK300	30	22.0	3000/106.0	680	4	16/230	206/453	112x68x80



SAS-200/300/500

**SAS-750/1000
SPS-750/1000**

Electric Power : 3 ϕ , 220V/380V/440V(50/60HZ)

Belt-Driven type

Starting Model : 380V / SAS 150-200 } Direct Connect
 220V/SAS150 }
 220V/SAS 200-1000 } Y- Δ Starting
 380V/SAS 300-1000 }

Max. Working Pressure : 15kg/cm²

Complete Cooling System, including air and lube oil.

MODEL	SAS-100	SAS-150	SAS-200	SAS-300	SAS-500	SAS-750	SAS-1000
HP	10	15	20	30	50	75	100
KW	7.5	11	15	22	37	55	75
WORK KG/CM ²	8	8	8	8	8	8	8
	10	10	10	10	10	10	10
	13	13	13	13	13	13	13
AIR m ³ /min/CFM	1.15 / 41	1.69 / 60	2.16 / 76	3.43 / 121	5.43 / 192	8.26 / 292	11.9 / 419
	1.02 / 36	1.51 / 53	1.90 / 67	2.91 / 103	5.01 / 177	6.97 / 246	10.1 / 356
	0.86 / 30	1.30 / 46	1.60 / 57	2.30 / 81	4.46 / 157	5.65 / 199	7.95 / 281
Cooling	Air	Air	Air	Air	Air	Air	Air
CM	85x60x124	100x80x125	100x80x125	115x95x142	130x100x160	170x110x170	200x120x170
KG	300	400	470	630	820	1640	1780
dBA	70	72	72	75	78	79	80

Features:

Using completely enclosed box and the principle of air convection to obtain automatic cooling effect.
Equipped with automatic device for easy operation.
Handsomely designed and dust proof.

Usage:

Laboratories, dental clinics, cottage industries or places that require silence.

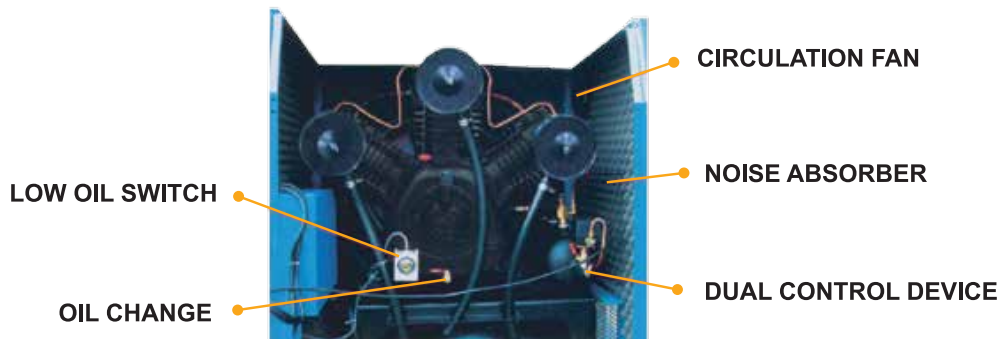


NCS30A



NCS100A

SILENT FEATURES

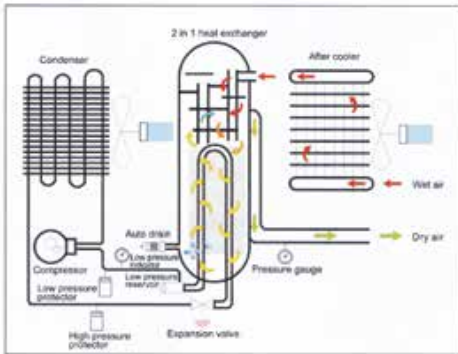


MODEL	HP	KW	l/min/CFM	R.P.M.	NO.	WORK Kg/cm ² /psi	MAX Kg/cm ² /psi	l/Gal.	Kg/Lbs.	cm	REMARK
-------	----	----	-----------	--------	-----	---------------------------------	--------------------------------	--------	---------	----	--------

NCS10A	1.0	0.75	185 / 6.5	980	980	2	8 / 115	95 / 25	105 / 231	65x61x95	
NCS20A	2.0	1.50	300 / 10.5	980	980	2	8 / 115	95 / 25	110 / 242	65x61x95	
NCS30A	3.0	2.20	460 / 16.0	770	770	2	8 / 115	110 / 30	195 / 429	80x74x111	
NCS50A	5.0	3.75	750 / 26.0	830	830	2	8 / 115	110 / 30	225 / 495	80x74x111	
NCS75A	7.5	5.60	1120 / 40.0	890	890	2	8 / 115	228 / 60	340 / 748	94x80x126	
NCS100A	10	7.50	1550 / 55.0	820	820	3	8 / 115	228 / 60	360 / 792	94x80x126	
NCS150A	15	11.20	2200 / 77.0	810	810	3	8 / 115	228 / 60	710 / 1420	116x96x160	

○ Tank cap. & Two stage. Is optional at customers request.
○ NCS30A and above come with auto/semi-auto and low oil switch.

ISO-9001
World Brand
Energy Value



REFRIGERATE COMPRESSED AIR DRYERS

- * NA series air dryers feature high efficiency and less pressure loss
- * HA series air dryers are ideal for high temperature air inlet application

HA Series

MODEL		05HA	10HA	15HA	20HA	30HA	50HA	100HA	150HA	200HA	250HA	300HA	400HA
← AIR	NM ³ /min	0.6	0.6	0.6	0.6	0.6	0.6	0.6	0.6	0.6	0.6	0.6	0.6
	SCFM	21	43	60	88	135	240	459	600	812	953	1130	1588
AIR COMPRESSOR (HP)		1-5	7.5-10	15	20	30	40-60	75	100	150	200	250	300
INLET TEMPERATURE		HA:80°											
AMBIENT TEMPERATURE		38°C											
DEW POINT		2-5°C(7Kg/cm ²)											
WORKING PRESSURE		7Kg/cm ² Max.10Kg/cm ²											
REFRIGERANT		R134a						R-22					
REFRIGERATE COMPRESSOR (HP)		1/5	1/3	1/2	3/4	1	1-1/2	3	4	5	6	7.5	8
POWER		220 SINGLE PHASE						220V / 380V / 440V 3PHASE					
CONNECTOR PIPE SIZE Ø		1/2"	3/4"		1"	1-1/2"	2"	3"	3"F	4"F	4"F	4"F	5"F
DIMENSIONS (MM)	H	460	600	650	760	760	760	1200	1400	1500	1500	1550	1600
	W	400	350	350	400	500	500	700	700	750	750	2000	2400
	D	500	640	770	820	1070	1070	1270	1515	1665	1665	850	950
WEIGHT (KG)		27	45	50	70	110	130	270	400	460	480	570	890

OIL-LESS BELT DRIVE AIR COMPRESSORS



超靜音牙科空壓機

SILENT DENTAL COMPRESSORS



WDS230 / 430



WDS2



WDS2X2

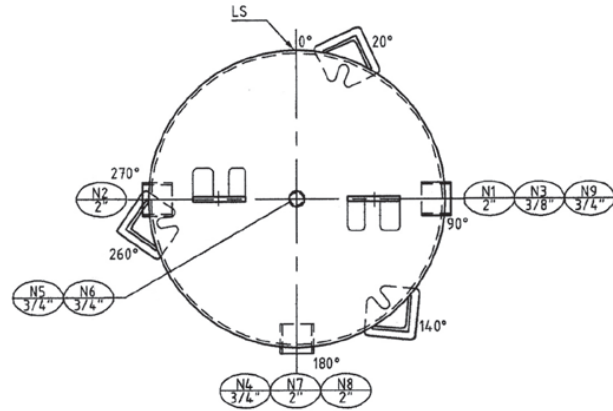
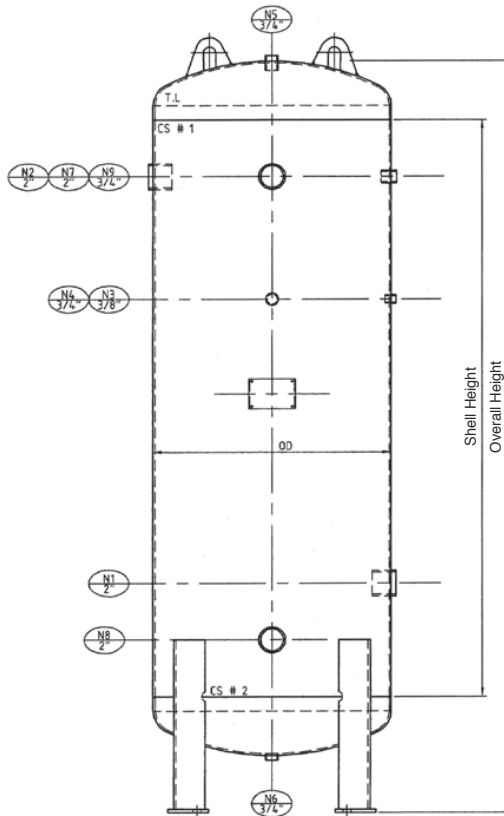


BF20100



BF100300

MODEL	Volt/Ph	Kw / HP	NO.	l / min 50Hz / 60Hz	WORK Kg/cm ² / psi	l / Gal.	dBA	Kg/Lbs.	cm	
WDS230	230 / 1	1.5 / 2	2	181 / 214	8 / 115	30 / 8.0	52	74 / 162	63x90x50	3 / 2
WDS430	230 / 1	3.0 / 4	4	362 / 428	8 / 115	30 / 8.0	52	87 / 191	63x90x50	4 / 3
WDS2	230 / 1	1.5 / 2	2	181 / 214	8 / 115	8 / 2.1	51	60 / 132	63x50x50	3 / 2
WDS2X2	230 / 1	3.0 / 4	4	362 / 428	8 / 115	8 / 2.1	51	120 / 264	63x100x50	6 / 4
WDS2X3	230 / 1	4.5 / 6	6	543 / 642	8 / 115	8 / 2.1	51	180 / 396	63x150x50	9 / 6
BF20100	230 / 1	1.5 / 2	2	285	8 / 115	95 / 25	-	91 / 200	116x50x86	-
BF50160	415 / 3	3.7 / 5	2	740	8 / 115	155 / 40	-	195 / 430	155x53x116	-
BF100300	415 / 3	7.5 / 10	3	1450	8 / 115	304 / 80	-	330 / 730	190x76x129	-



MARK	SERVICE	SIZE	REMARK
N1	AIE INLET	2"	150 lbs BSP COUPLING
N2	AIR OUTLET	2"	150 lbs BSP COUPLING
N3	PRESSURE GAUGE	3/8"	150 lbs BSP COUPLING
N4	CONTROL	3/4"	150 lbs BSP COUPLING
N5	PRESSURE RELIEF	3/4"	150 lbs BSP COUPLING
N6	DRAIN	3/4"	150 lbs BSP COUPLING
N7	INSPECTION OPENING	2"	150 lbs BSP COUPLING C/W PLUG
N8	INSPECTION OPENING	2"	150 lbs BSP COUPLING C/W PLUG
N9	SPARE	3/4"	150 lbs BSP COUPLING

TECHNICAL SPECIFICATION

Volume (Liters)	Design Pressure (Bar)	Dimensions (mm)			Inspection Opening	Connections	Weight (kg)
		OD	Shell Height	Overall Height			
300	10	605	762	1230	2" Socket x 2nos.	2" Socket	106
500	10	605	1524	1986	2" Socket x 2nos.	2" Socket	190
750	10	605	1830	2365	2" Socket x 2nos.	2" Socket	240
1000	10	775	1830	2499	2" Socket x 2nos.	2" Socket	310
1500	10	930	1830	2580	2" Socket x 2nos.	3" Flange	600
2000	10	930	2440	3190	2" Socket x 2nos.	3" Flange	715
2000	10	1100	1830	2660	12"x16" Manhole	3" Flange	770
3000	10	1168	2440	3310	12"x16" Manhole	3" Flange	1150
4000	10	1320	2440	3450	12"x16" Manhole	4" Flange	1320
5000	10	1470	2440	3549	12"x16" Manhole	4" Flange	1620
6000	10	1600	2440	3626	12"x16" Manhole	4" Flange	1800
8000	10	1840	2440	3684	12"x16" Manhole	6" Flange	2850
10000	10	2030	2440	3800	12"x16" Manhole	6" Flange	3500

Belt Driven Tank Mounted Screw Air Compressor

-  Silenced
-  High Efficiency
-  Energy Saving

Features

- Compact design for space saving.
- Tank mounted compressor.
- Total enclosed compressor. Air inlet at the bottom and exhaust at side for better convection and cooling.
- Intelligent control panel:
 - Monitoring compressor temperature, current, and cooling fan current.
 - Able to connect to 8 compressors through RS485
 - Time settings for consumables.
 - Internet connection via WIFI.
 - Working status display.
 - Remote switch control.

Application industry

Production facilities, Vehicles, Electronics, Chemicals, Constructions, Cements, Food Industry, Packaging, Air Instruments, Petrol Stations/ Car Wash, Furniture Manufacturing, Medical/ Pharmaceutical, Vehicle Services, Textiles, Glass Manufacturing, Laser Cutting.



SL20T

MODEL	HP - KW	WORK Kg/cm ²	AIR M ³ /min/CFM	Cooling	cm	ℓ	Kg	dBA
SL5T	5 / 3.7	8	0.54 / 19.0	Air	129×70×166	310	335	69
		10	0.47 / 16.5					
SL7AT	7.5 / 5.5	8	0.81 / 28.5	Air	129×70×166	310	350	70
		10	0.70 / 24.6					
SL10T	10 / 7.5	8	1.10 / 39.0	Air	129×70×166	310	360	72
		10	0.98 / 34.5					
SL15T	15 / 11	8	1.50 / 53.0	Air	129×70×181	310	450	74
		10	1.35 / 47.5					
SL20T	20 / 15	8	2.30 / 81.0	Air	129×70×181	310	500	75
		10	1.90 / 67.0					